

Culture club news

Life is more than work...
boost your downtime
with new things
to try



Stars Appeal Live
musicians playing
at SDH this month:
October

- 3rd Sarah - piano
- 5th Emmy - harp
- 10th Rosie - clarinet
- 12th Sarah - piano
- 17th Emily - violin & guitar
- 19th Pearl - ukelele
- 24th Sophie - piano
- 26th Emily - violin & guitar
- 31st Sarah - piano

Enjoy more music on ArtCare's
YouTube channel @ArtCare UK



Are you a confident pianist?

Email [ArtCare](mailto:sft.artcare@nhs.net) to join the playlist
for the Spring's Performance
Piano and bring
comfort and
harmony to
the restaurant
atmosphere.



Contact ArtCare
sft.artcare@nhs.net
...join the mailing list
...join the arts club
...suggest new items for this
newsletter

onsite and local activities and events

connect, celebrate, collaborate

Culture club news - a round up of the activities, events and groups to connect into both onsite at Salisbury District Hospital (SDH) and in the local community.



Exhibitions at SDH

Levels 3 & 4 main corridors to 10
October

'Well-City' Salisbury

End of year exhibition, celebrating the
achievements and journeys of all who
took part in year two.



CSF Wrestling: Live in Devizes

Saturday 21 October | 1800 | Tickets £12

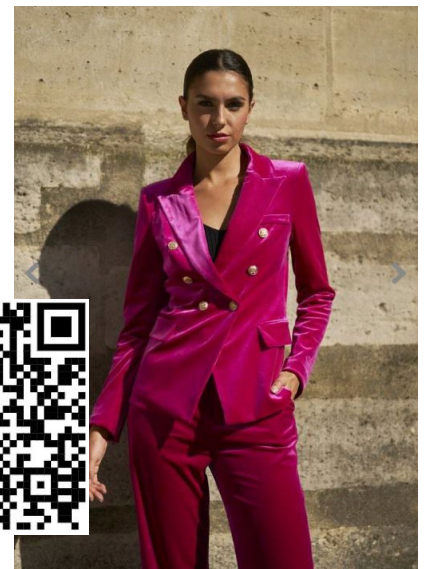
Bone crunching, body slamming, gravity defying
and high flying wrestling action returns to the
Corn Exchange in Devizes. This family friendly
entertainment is suitable for all ages.



Returning this Autumn Rockbourne Fair supporting The Stars Appeal

Salisbury Racecourse | 18-20
October | entry fee £5

This year's fair promises late-night
shopping on Thursday 19 October
and features over 100 handpicked
stalls. Visitors will be
treated to a rich variety
of products – from
fashion to gourmet
food to cosmetics to
toys and jewellery.



Culture Club - *Block 15, opposite the Green*

Join us at our Culture Club for art & history clubs, free of charge, each month. Open to all. Relaxed atmosphere. No previous arty experience necessary. Tea and biscuits too!

Pre-book these sessions on Eventbrite



Drop Ins.....

Creative Coffee Club - 13 October, 10 November

Drop-in art club, anytime 1000-1200. Different creative materials to try each month.

Creative Lunch - 19 October, 16 November

Drop-in art club, anytime 1200-1400. Different creative materials to try each month.

History Coffee Club - 27 October, 24 November

Drop in history club with chat, anytime 1000-1200. Explore themed items from our archives.

History Lunch - 2 November

Drop in anytime 1200 - 1400 for coffee and relaxed discussion whilst exploring our archives and history collections. Open to all and free of charge. No previous experience necessary.

Please note there is a small step into the Culture Club, if you have any access needs please let us know. Culture Club is opposite The Green bus stop (first hospital stop for the R1 from the city centre). Blue badge parking around The Green or public car parks nearby.

For more details look out in the daily bulletin or email sft.artcare@nhs.net

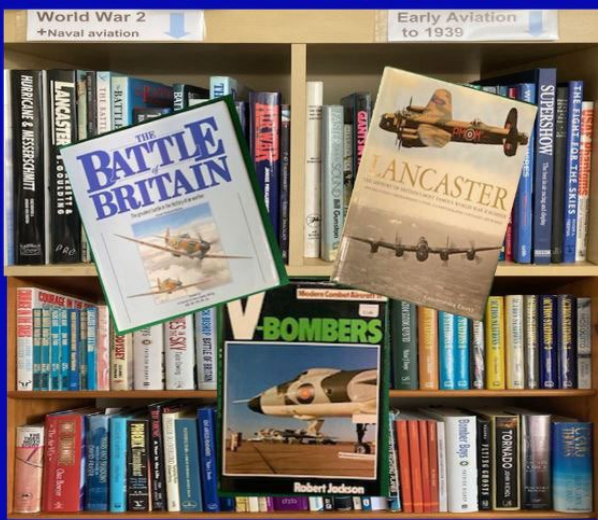


What vegetables to plant in October?

Lettuce, Spinach, Chard, Kale
Spring onions & Spring cabbage.
Sowing vegetables in September will bring spring harvests and help to cover the 'hungry gap' between seasons. They can all be sown as seeds, straight into prepared soil. Protect from birds with tightly secured netting.



GRAND AVIATION BOOK SALE



**1 Day Event at
Boscombe Down Aviation Collection
at Old Sarum**
Sunday 22nd October 2023 10am-4pm
Large selection of good condition
books for sale at bargain prices
Hangar 1 South, Old Sarum Airfield,
Old Sarum, Salisbury, Wiltshire. SP4 6DZ
Tel: 01722 323636
hugh.sillett48@btinternet.com
www.boscombedownaviationcollection.co.uk

No Waste Flying Geese Patchwork and Quilting

6 Oct 10:00 - 16:00 Franklins, Salisbury

Come and spend the day with Emma and learn how to make No Waste Flying Geese. This lovely block can be made again and again to make a quilt the size you want. Finished block is approximately 18" in size which means your quilt will grow quickly! For more info QR code below



The Neon Circus Halloween Show Anchor & Hope, 21 - 22 October, 1900, £6

This thrilling event will transport you to our world of mesmerizing performances, and eerie surprises. From daring acrobatics to mind-bending illusions, this Halloween extravaganza promises to keep you on the edge of your seat.



The Marlborough Big & Little Mop High Street, SN8 1HD, 7-14 October

Known as the Marlborough Big Mop and Little Mop, the Mop Fairs were originally held as hiring fairs where farm and rural craft workers came to find jobs. Housemaids carried a mop to signify their trade – hence the name. Now hosting a funfair that takes over the town, the Fairs are one of the highlights of the year.



Nature Walks SDH

Free monthly lunchtime informal nature walks around Salisbury District Hospital guided by staff member James Macpherson. Upcoming dates: 3 October, 1300-1400, meet Culture Club, SDH. Scan QR code, above, to book via ArtCare's Eventbrite page

Tell us about favourite places and activities that you would recommend to others: **email us at sft.artcare@nhs.net**

Not to be missed...dates for your diary

3 October | Weymouth Family Science Festival

From creepy crawlies & exotic animals to looking at the stars to paint your own fossil, Nothe Fort is really excited to be hosting the first family science festival in Weymouth. A wide range of science demonstrations will be dotted around the Fort. We will be making our own rockets to launch in the parade ground. This free event is included as a part of your entrance ticket/annual pass.



11 October | Knicker Making and Lingerie Techniques | Franklins | 0945 - 1615

Come along to Amesbury Library for a morning of heartfelt stories and stunning puppetry - a show for older people. Join Tall Tree Theatre for a show full of live music, heartfelt storytelling, and stunning puppetry. The performance will include an opportunity to discuss how the puppets are made and animated. Tea and coffee will be served before the show at 10.30am. This is a free event but places are limited. Please ask a member of the library staff about booking or call 01980 623491.

Evening Owls | 7,14,21 October | 1800-2030 | Tickets £21.50

This autumn, join the Hawk Conservancy Trust for a special evening with their owls. As night falls, you'll experience the mystical owls' graceful, silent flights in and out of the darkness over their Savannah Arena and amongst mysterious woodland. Before the flying displays, there will be chance to explore parts of the grounds to meet some of the other owls in their care, where the Trust will give you an insight to some of the conservation and research projects that they undertake with British owls. Feathers Restaurant will be serving a delicious menu to keep you feeling warm throughout the evening.



Parsons Pumpkin Picking Patch | opening 7 October

Upper Farm has been busy growing 1000's of pumpkins for you to find the perfect pumpkin to carve and/or decorate your home. On arrival, a £5 voucher will be issued to use towards a pumpkin/s of your choice. Pumpkin picking slots are available on selected weekends in October (and one day during half term)



Army Flying Museum Fundraising Quiz | 19 October

Join us for a fun general knowledge quiz in the stunning surroundings of the Hayward Hall at the Army Flying Museum. Tickets are £3 per person with teams of up to eight people. Platinum, Gold and Silver members go free, but tickets must be booked in advance.

Bar service will be available and there will be the chance to enter some additional fun quiz rounds and a raffle to raise funds for the Museum.



Ghost Walks | 25,26,28,29 & 30 October

Join the Salisbury City Guides for some spooky walks this Halloween. The classic ghost walk takes place 25, 26, 28 & 29 October at 1900. On Friday 29 there are two walks at 1900 & 1930. Family Frighteners Walks take place on 26 & 30 October, starting at 1800. The walk is for families/adults with children of primary school age. All the walks start at Salisbury Information Centre on Fish Row. Tickets need to be purchased in advance and are available from the information centre or calling 01722 342860, salisburycityguides.co.uk



SHIFT Social Halloween Party

Salisbury Arts Centre
Sat 28 Oct, Tickets from £3
Age 14-21

This October half term trick or treat yourself at Salisbury Arts Centre for a spooktacular night of boogying to live music performed by young artists and get involved in creepy crafts and monster mischief.

Remember to creep it real in your ghoultastic glad rags to make sure you are the pick of the pumpkin patch.

