

Culture club news

Life is more than work...
boost your downtime
with new things
to try



Stars Appeal Live
musicians playing
at SDH this month:
December

- 5th Rosie - clarinet
- 7th Pearl - ukulele and piano
- 12th Dan - violin and guitar
- 14th Sarah - piano
- 19th Frankie- singing
- 21st Sarah - piano
- 26th Sophie - piano
- 28th Emmy - harp

Enjoy more music on ArtCare's
YouTube channel @ArtCare UK



Are you a confident pianist?
Email ArtCare to join the playlist
for the Spring's Performance
Piano and bring
comfort and
harmony to
the restaurant
atmosphere.

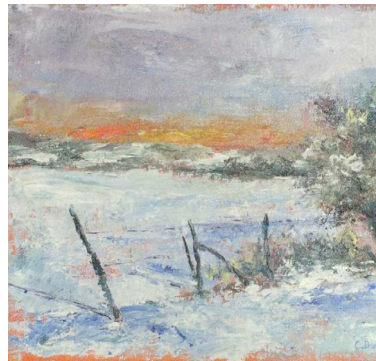


Contact ArtCare
sft.artcare@nhs.net
...join the mailing list
...join the arts club
...suggest new items for this
newsletter

onsite and local activities and events

connect, celebrate, collaborate

Culture club news - a round up of the activities, events and groups to connect into both onsite at Salisbury District Hospital (SDH) and in the local community.



Exhibitions at SDH

Levels 3 & 4 main corridors
23rd November - 4th January

SGA Winter Exhibition

Salisbury District Hospital Choir

The SDH choir was set up by administrator Jeni Colton and Chaplain Sharon Boyle for the wellbeing of SDH staff. Listen out for them around the wards on 6th & 13th December 5-7pm, when they will be singing Christmas selections for everyone's enjoyment.

The newly formed choir currently has about twelve members and they enjoy singing anything from Bruno Mars to Disney, Country and Pop to Christmas tunes. They meet every Wednesday between 5pm-7pm in the Lecture Theatre, Level 5 (from January 10th it will be in the Chapel, Level 3). **They would love to welcome new members- all are welcome of any singing ability!**

If you are interested in joining them do pop along or contact either Sharon Boyle (sharon.boyle7@nhs.net) or Jeni Colton (jeni.colton@nhs.net)



Culture Club - *Block 15, opposite the Green*

Join us at our Culture Club for art & history clubs, free of charge, each month. Open to all. Relaxed atmosphere. No previous arty experience necessary. Tea and biscuits too!

Drop Ins.....

History Lunch - 7th December, 4th January

Drop in anytime 1200 - 1400 for coffee and relaxed discussion whilst exploring our archives and history collections. Open to all and free of charge. No previous experience necessary.

Creative Coffee Club - 8th December, 12th January

Drop-in art club, anytime 1000-1200. Different creative materials to try each month.

Creative Lunch - 21st December, 18th January

Drop-in art club, anytime 1200-1400. Different creative materials to try each month.

History Coffee Club - 26th January

Drop in history club with chat, anytime 1000-1200. Explore themed items from our archives.

Please note there is a small step into the Culture Club, if you have any access needs please let us know. Culture Club is opposite The Green bus stop (first hospital stop for the R1 from the city centre). Blue badge parking around The Green or public car parks nearby.

For more details look out in the daily bulletin or email sft.artcare@nhs.net

Pre-book these sessions on Eventbrite



Staff Arts Club

Christmas Rubber Stamp Carving Workshop on 11th Dec.

Join Tamsin Loveday to design and carve your personal set of mini rubber stamps to add delightful details to your Christmas stationery.

Learn how to transfer your designs onto the special double layer rubber stamp carving material, before starting to carve using lino-cutting tools. Full instructions will be given and help as needed.

Places are £7.50 and can be booked via www.eventbrite.co.uk/e/760554869087?aff=oddtcreator

For further information please contact ArtCare sft.artcare@nhs.net or ext. 5617



A Focus on Julie Higgins

Julie works for Salisbury Foundation Trust as a Clinical Audit Facilitator and is an award winning author of spooky mystery thrillers...

In 2021 her book "Finding Ruby" won the Page Turner Book Awards, an international competition for mainstream and independent authors, and it was produced into an audiobook as her prize.

"I have always enjoyed a good mystery, thriller, or ghost story, so I write the genre of books that I enjoy reading. The Nell Montague Mystery series: "Finding Ruby, and "A Long Time Burning", is inspired by historic Salisbury and the surrounding area, where I can always find something to spark my imagination. The medieval buildings and ancient woodlands hold



many myths and legends, and the Old Manor site has been a particular inspiration for much of my writing."

"My colleagues at Salisbury have been incredibly supportive of my writing, whether it is telling me tales of the old infirmary or helping me get terminology correct when I am describing injuries and medical conditions. I am currently writing book three of the series and it will be as creepy, dark and disturbing as the first two!"

Julie's books are perfect for curling up with on a dark evening and also make fabulous Christmas gifts! Paperback copies of both books, priced at £8.99 are available to purchase through ArtCare ext 5617. You can also find her books at Stuff Emporium, Winchester Street, Salisbury or buy them through Amazon along with her paranormal thriller eBook "Three Spells for Christmas."



Stars Appeal Live Christmas Programme

An extra, festive programme of live music, art and storytelling is taking place from 6th-23rd December at multiple locations around the hospital. Funded by the Stars Appeal, the music includes Stars Appeal Live artists, as well as local guest performers.

Wed 6th	SDH choir	5pm - 7pm
Thurs 7th	Salisbury Playhouse pantomime characters visit	2pm - 4pm
Wed 13th	Lilli Badcock-singer	10.30am - 12.15pm
	SDH Choir	5pm - 7pm
Thurs 14th	Creative arts with Stephanie on Sarum Ward	10.30am - 4pm
Fri 15th	Bishop Wordsworth School Band, Main Entrance	11am - 12pm
	Singer Frankie Simpkins	1.15pm - 6pm
Sun 17th	Jazz duo- Dan Baker & Paul Young	10.30am - 4pm
Mon 18th	Musician- Sarah Collins	10.30am - 4pm
	Festive Storytelling with Hannah Moore in the lovely new wooden Gazebo on the Green.	12.30pm - 4.30pm
	Special 30 min staff sessions with free hot choc at 12.30pm, 1.15pm & 4pm Book via eventbrite: http://bit.ly/3Rc2Se6	
Tues 19th	Breathless Singers, Main entrance	12.30pm - 1pm
Wed 20th	Fordingbridge Choral Society, Main entrance	11am - 12pm
	The Evolution Choir	7pm - 9pm
Thurs 21st	Brass Duo	3.30pm - 4.30pm
Fri 22nd	Singer- Frankie Simpkins	10.30am - 3.45pm
	Sarum Recorder Consort	2pm - 4pm
Sat 23rd	Cathedral Choristers	2pm - 4pm

There will also be Stars Appeal Live musicians providing some seasonal cheer during staff Christmas lunches served in Springs Restaurant!



Culture club Spotlight

Explore activity on site: www.artcaresalisbury.uk
Explore the city: www.experiencesalisbury.co.uk
Explore Wiltshire: www.visitwiltshire.co.uk/whats-on

Tell us about favourite places and activities that you would recommend to others: **email us at sft.artcare@nhs.net**

Not to be missed...dates for your diary

23rd Nov - 23rd Dec, 11am - 3:30pm. "A Christmas Carol" at Mompesson House

Enter Charles Dickens' world and discover the sights, sounds and smells of a Victorian Christmas. Entry - Adults £8.50, Children £4.25

5th - 10th Dec, Mon-Sat 10am - 6pm, Sunday from 12 noon, Christmas Tree Festival, St Thomas's Church, Salisbury

The Church will be filled with decorated Christmas trees and nativity scenes. Free entry with a retiring collection to be shared between Salisbury Trust for the Homeless, Salisbury Alzheimer's Support and St Thomas's Church.

10th Dec 11am - 1pm, Star Willow Wands with Alison Pritt at Casa Fina, 62 High St Salisbury

Join artist, Alison, to watch her hand craft the wands which will be available for sale along with a small range of her other willow decorations. FREE

5th and 11th Dec, 6.30pm - 8.30pm Silent Disco, Guildhall Square, Salisbury

A FREE Christmas silent disco- choose your tunes and dance the night away!

19th Dec, 1.10pm, Carols for Busy People St Thomas's Church, Salisbury

A fast moving and joyous one hour carol service in aid of charity. FREE

17th Nov - 23rd Dec, Twelve Elves of Christmas Trail, Salisbury City Centre.

Support The Stars Appeal and help find Twelve Cheeky Elves who are up to mischief in the shop windows around the City! Collect your trail sheet from either the Salisbury Information Centre (Fish Row) or Five Rivers Leisure Centre (Hulse Road). When you have found all 12, post your completed trail sheet back to the Salisbury Info Centre by the 23rd Dec to be in with a chance to win an AMAZING crafty hamper worth £50 from The Works! £2 per child.

9th Dec, 10am - 5pm, Christmas Big Brick Build! Salisbury Museum, Donation entry all day

Visit Salisbury museum on their winter donation entry day, the Big Brick Build activity is included in admission of a suggested donation entry of £2 per person. This special event takes place in their new lecture hall - unveiled for the first time!

There will also be festive make and take brick model kits to buy on the day and an exclusive Salisbury 'City of Stars' model as part of their citywide celebrations.

03 Nov - 23 Dec 10am- 5pm, Vessels, The Vanner Gallery, 45 High Street

Exhibition curated by Jacqueline Creswell, 15 outstanding artists explore the diverse meaning of the vessel in ceramics, sculpture, painting and photography. Free entry.



IN AID OF ALZHEIMER'S RESEARCH UK
SALISBURY BIG BAND PROUDLY PRESENTS
A Big Band Christmas
Salisbury Guildhall, Market Square, Salisbury
SATURDAY DECEMBER 16TH
7:30
ENTRY PRICE
£15
DRINKS MINCE PIES
Tickets Available: 07766245209
salisburybigband@gmail.com

Salisbury Big Band proudly presents:

A Big Band Christmas

Saturday Dec 16th at 7.30pm
Salisbury Guildhall, Market Square, Salisbury

Tickets £15 sold in aid of Alzheimers Research UK available from salisburybigband@gmail.com or 07766245209